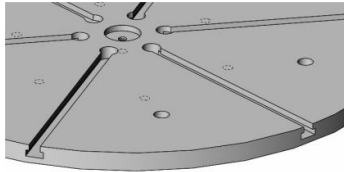




### OPTIONAL Modifications & Equipments;

**T-SE :**Round Worktable T-Side Entry Grooved Thick Table Plate



**BTT-M02:** Fastening Apparatus



#### General Features ;

- BTT model Turn Table is widely used industrial, petro-chemical, chemical, energy power plant, transmission, ship building, etc.sectors
- BTT model Turn Table is designed for easily mounting of cylindrical parts for twizzling of by means of worktable provided. Optional special quick mounting-detaching equipment provides easy working advantage.
- BTT model 1 axis Turn Table Positioner, Regardless of any geometric shape within dimensions of the machine, In favour of being able to position and generating remarkable welding edges to all workpieces are qualified & ideal solutions. Ensures utmostly capability of welding & likewise assembling at 360° degree of any required position .
- Avoids of crane operations that are part handling, rotating of parts, etc. during production, Provides the opportunity of using operator's working power to use more effectively by minimizing time loss and it increases the efficiency of work..
- Operators can control workpieces over BTT TurnTable Positioner whether in Counterclockwise(CW) or Counterclockwise(CCW)by means of cable command control. They can easily rotate at adjustable speeds.
- BTT-model Turn Table Positioner WorkTable is supplied as standard with Slot grooved. Optionally, If Worktable is requested as T-Grooved Thick Plate also can be manufactured as an option.

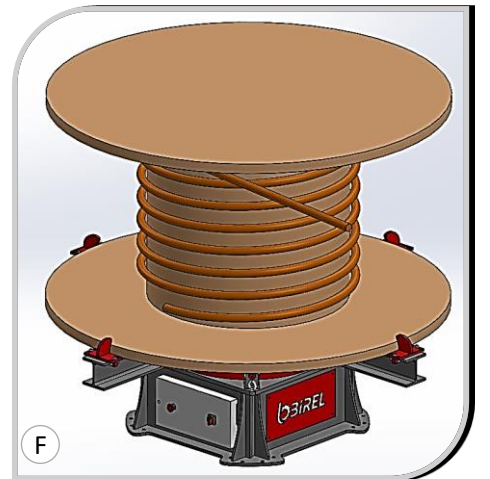
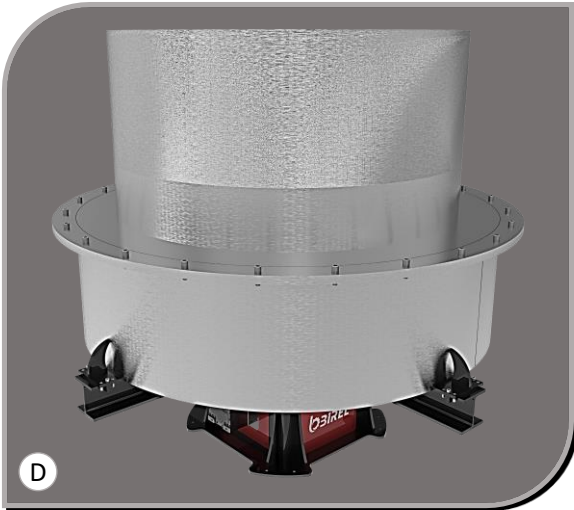
#### Technical Advantages ;

- Birel Machinery as standard provides BTT models in capacities of 1 - 2 - 3 - 5 - 10 - 25 - 50 ton.
- In special conditions, Out of these standard capacities, Birel Machinery, according to customer standards & requirements, has the opportunity of manufacturing possibility at different capacities.
- Motor with brake and forced fan cooling.
- Welding Arc Group
- Allow quick connection of workpieces by using " T " slots on worktable (Optional)
- For any special request or project, Please do not hesitate to contact with us.

❖ All technical specifications are subject to change without prior notice.



ILLUSTRATIONS



❖ All technical specifications are subject to change without prior notice.





FEATURES



Standard Features

- Round Worktable with Slots.
- Adjustable worktable rotation speed
- Rotational Speed Dijital display on Electrical Cabinet
- Ability of 360 degree worktable rotation.
- Limit Switches to terminate movement.
- 5 m. Command Cable with Hanbox
- 5 m. Power Cable
- Brake & Fan Cooled Motor (Asynchronous)
- Welding Earthing Group
- Standard Machine Colors:
  - Chassis RAL 7011(Grey)
  - Sheet Covers:RAL 3020(Red )
- Power Supply: 380V - (3 phase+Neutral +Earthing)
- One (1) Year Warranty (wearing parts out of warranty)

Optional Control Units

DFPSE

Double Foot Pedal+Stick+  
Emergency Stop (3 m )



OHC

Overhead Hangable Control



SFP

Single Foot Pedal



WRC

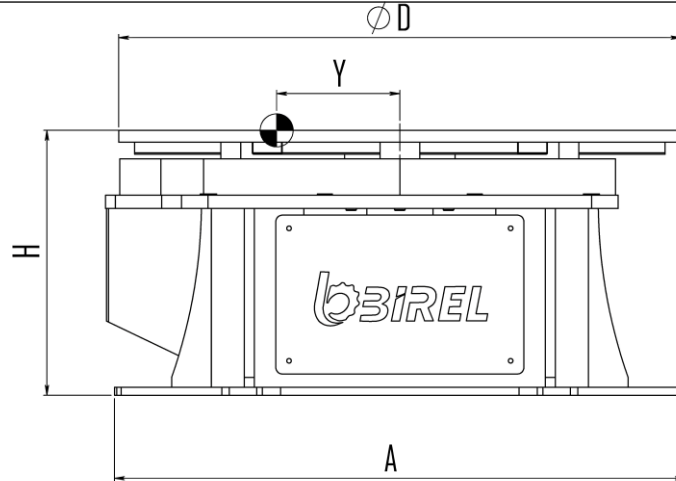
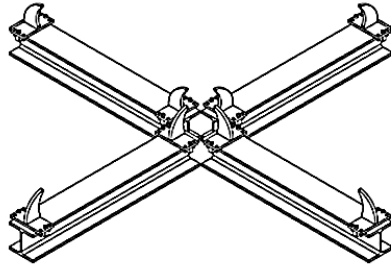
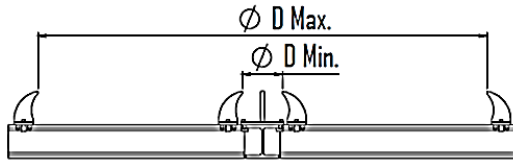
Wireless Remote Control



❖ All technical specifications are subject to change without prior notice.

TECHNICAL PROPERTIES

OPTIONAL (BTT- M02 )



Technical Details :

| Model : BTT   | Symb. | Unit | BTT-1    | BTT-2     | BTT-3     | BTT-5      | BTT-10    | BTT-25    | BTT-50    |
|---|-------|------|----------|-----------|-----------|------------|-----------|-----------|-----------|
| Capacity  |       | kg   | 1 000    | 2 000     | 3 000     | 5 000      | 10 000    | 25 000    | 50 000    |
| Rotation Speed  |       | rpm  | 0.15-1.4 | 0.06-0.55 | 0,06-0,55 | 0.06 -0.55 | 0.05-0.33 | 0.05-0.20 | 0.05-0.20 |
| Welding Current                                       |       | Amp  | 700      | 700       | 700       | 1000       | 1000      | 1000      | 1000      |
| Offset Distance                                       | Y     | mm   | 150      | 150       | 150       | 130        | 100       | 80        | 80        |
| Table Plate Diameter                                  | ØD    | mm   | 850      | 900       | 1000      | 1250       | 1500      | 1800      | 2000      |
| Diameter that can be fixed onto the apparatus BTT-M02 | Ød-ØD | mm   | 200-2000 | 200-2000  | 200-2000  | 200-2200   | 600-4400  | 600-4400  | 600-4400  |
| Height  | H     | mm   | 400      | 450       | 490       | 490        | 650       | 720       | 770       |
| Length  | A     | mm   | 860      | 980       | 1020      | 1250       | 1350      | 1550      | 1660      |
| Width   | A     | mm   | 860      | 980       | 1020      | 1250       | 1350      | 1550      | 1660      |
| Power of WorkTable                                    |       | kW   | 0.37     | 0.37      | 0,37      | 0.55       | 0.55      | 0.75      | 1.1       |
| Weight  |       | kg   | 360      | 570       | 570       | 685        | 1250      | 2100      | 3200      |

Out of these stand.ard capacities, Birel Machinery, according to customer requirements, has the manufacturing possibility at different capacities, sizes.

❖ All technical specifications are subject to change without prior notice.