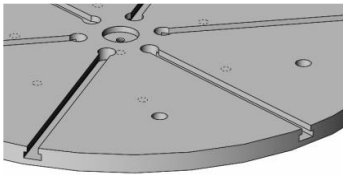
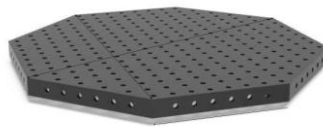


OPTIONAL Modifications & Equipments;

T-SE :Round Worktable T-Side Entry Grooved Thick Table Plate



OC-T:Octagonal Table



MC : Manual Chuck



BGR: 3-Jaw Manual Pipe Gripper



General Features ;

- BHP model Hydraulic Elevating Positioner is designed at best suitable configuration to supply function of worktable rotation & tilting of worktable angularly..
- Dissimilar to other positioners, Upon BHP model Hydraulic Elevating Positioner , Although the workpiece is mounted on the workplate, Height is adjustable hydraulically. Thus, Operators can work more effective & efficient.
- BHP model Hydraulic Elevating Positioner , without considering of any geometric shape , all parts within dimensions has capability of positioning & forming suitable welding edge.
- BHP model Hydraulic Elevating Positioner , as structuraly are constituted of Body, Motor ,Worktable rotation and tilting systems, electric panel and cable remote operator control.
- BHP model Hydraulic Elevating Positioner as structuraly has the best protective system. Against heavy parts positioner should be anchored to the facility ground.
- Rotation of BHP model Hydraulic Elevating Positioner's Worktable is done by means of gear transmission system and tilting and height movements are performed by hydraulic system.
- Enable quick connection of workpiece by means of Slot Groove or T-Grooved worktable.
- BHP-Hydraulic Elevating Positioner WorkTable is supplied as standard with Slot grooved. Optionally, If Worktable is requested as T-Grooved Thick Plate also can be manufactured as an option.

Technical Advantages ;

- Birel Machinery as standard provides BHP models in capacities of 0,5 - 0,75 - 1 - 1,5 - 2 - 3,5 - 5 - 8 - 10 - 15 ton.
- In special conditions, Out of these standard capacities, Birel Machinery, according to customer standards & requirements, has the opportunity of manufacturing possibility at different capacities.
- Motor with brake and forced fan cooling.
- Welding Arc Group
- Allow quick connection of workpieces by using " T " slots on worktable (Optional)
- For any special request or project, Please do not hesitate to contact with us.

❖ All technical specifications are subject to change without prior notice.

ILLUSTRATIONS



Standard Features

- Round Worktable with Slots.
- Adjustable worktable rotation speed
- Rotational Speed Dijital display on Electrical Cabinet
- Hydraulic movement for tilting.
- Hydraulic movement for elevating.
- Limit Switches to terminate movement.
- 5 m. Command Cable with Hand Control Unit.
- 5 m. Power Cable
- Brake & Fan Cooled Motor (Asynchronous)
- Welding Earthing Group
- Standard Machine Colors:
 - Chassis RAL 7011(Grey)
 - Sheet Covers:RAL 3020(Red)
- Power Supply: 380V - (3 phase+Neutral +Earthing)
- One (1) Year Warranty (wearing parts out of warranty)

Optional Control Units

DFPSE

Double Foot Pedal+Stick+
Emergency Stop (3 m)



SFP

Single Foot Pedal



OHC

Overhead Hangable Control



BHP-HMI

PLC-HMI Display Control



WRC

Wireless Remote Control

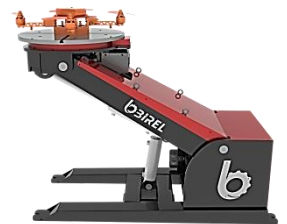
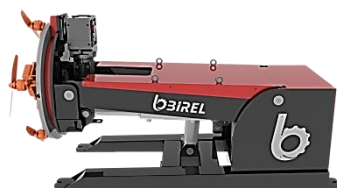
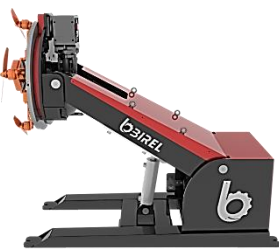
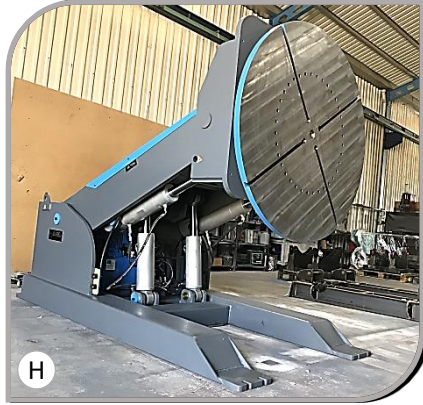


❖ All technical specifications are subject to change without prior notice.



STANDARD Hydraulic Lifting Welding Positioner Model (3AX)

ILLUSTRATIONS



❖ All technical specifications are subject to change without prior notice.

Optional

PLC-HMI Display Controlled;

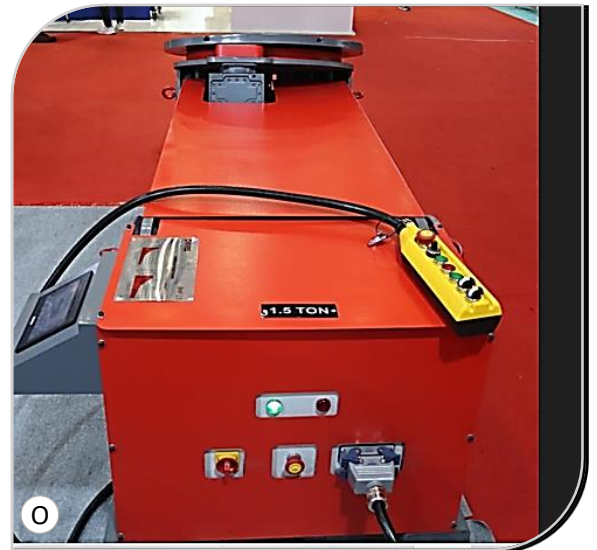
09:38:51		BIREL MÜHENDİSLİK BHP POZİSYONER				BIREL		
	PROGRAM YÜKLE	PROGRAM	99	ALT PROGRAM	99			
	HAFIZAYA AKTAR	 				LIFT	9999	LIFT
	KAYDET					STOP	TILT	9999
	LIFT	9999	TILT	999	TABLA HEDEF POZİSYONA GİT	STOP		
	TILT	999	TABLA HEDEF POZİSYONA GİT	TABLA	±999	STOP		
	TABLA AÇI	±999	TABLA HEDEF POZİSYONA GİT	TABLA	±999	STOP		
	TABLA HIZ	99.99	TABLA HEDEF POZİSYONA GİT	TABLA	±999	STOP		
	TABLA HIZ	99.99	TABLA HEDEF POZİSYONA GİT	TABLA	±999	STOP		
	TABLA HIZ	99.99	TABLA HEDEF POZİSYONA GİT	TABLA	±999	STOP		
	TABLA HIZ	99.99	TABLA HEDEF POZİSYONA GİT	TABLA	±999	STOP		
	TABLA HIZ	99.99	TABLA HEDEF POZİSYONA GİT	TABLA	±999	STOP		
	TABLA HIZ	99.99	TABLA HEDEF POZİSYONA GİT	TABLA	±999	STOP		
	TABLA HIZ	99.99	TABLA HEDEF POZİSYONA GİT	TABLA	±999	STOP		



M



N

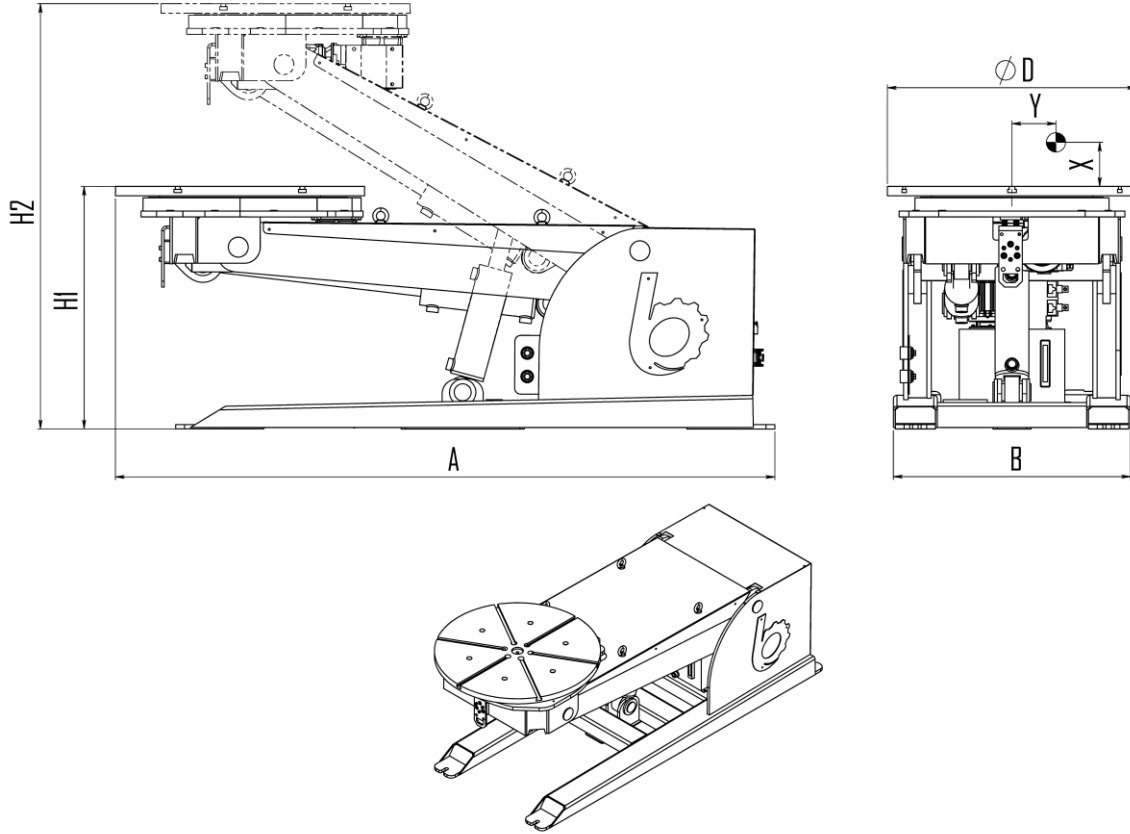
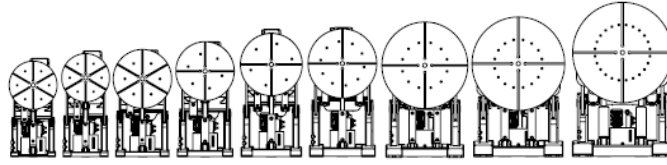


O

❖ All technical specifications are subject to change without prior notice.

STANDARD Hydraulic Lifting Welding Positioner Model (3AX)

TECHNICAL PROPERTIES



Technical Details :

Model No : BHP	Symb	Unit	BHP-050	BHP-075	BHP-1	BHP-1,5	BHP-2	BHP-3,5	BHP-5	BHP-8	BHP-10	BHP15
Capacity		kg	500	750	1 000	1 500	2 000	3 500	5 000	8 000	10 000	15 000
Rotation Speed		rpm	0,15-1,75	0,15-1,5	0,15-1,4	0,15-1,3	0,15-1	0,15-1	0,15-0,78	0,1-0,66	0,1-0,5	0,06 - 0,63
Max.Rotational Torque		Nm	750	1150	1570	2290	3050	5300	7500	12050	15050	18000
Tilting Angle		deg	120	125	120	120	120	115	110	110	110	125
Tilting Torque		Nm	1350	2200	3300	4500	5600	11050	17300	28680	37050	76850
Max.Welding Current		Amp	400	700	700	700	700	700	1000	1000	1000	1000
Offset Distance	X-Y	mm	150 - 150	150 - 150	150 - 150	150 - 150	150 - 150	150 - 150	150 - 150	150 - 150	150 - 150	450-120
Work Plate Diameter	ØD	mm	700	700	850	850	900	1000	1150	1250	1350	1450
Height (Min-Max.)	H1-H2	mm	710-1200	760-1310	800-1340	825-1450	910-1545	960-1575	1000-1600	1050-1645	1160-1830	1300 - 2230
Length	A	mm	1900	1960	2240	2255	2375	2575	2900	3100	3200	3330
Width	B	mm	650	660	780	810	880	960	1130	1300	1460	1820
Motor Power of Table		kW	0,25	0,37	0,37	0,55	0,55	0,75	1,1	1,5	1,5	2,2
Motor Power of Hydraulic Unit		kW	0,75	1,1	1,1	1,5	1,5	2,2	2,2	3	5,5	5,5
Weight		kg	585	650	880	1300	1420	1650	2720	3500	4600	6820

↪ Out of these standard capacities, Birel Machinery, according to customer requirements, has the manufacturing possibility at different capacities, sizes.

❖ All technical specifications are subject to change without prior notice.