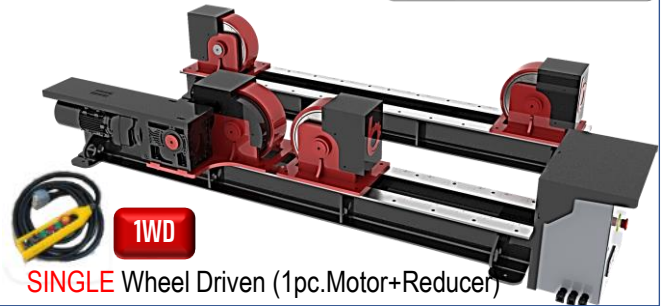


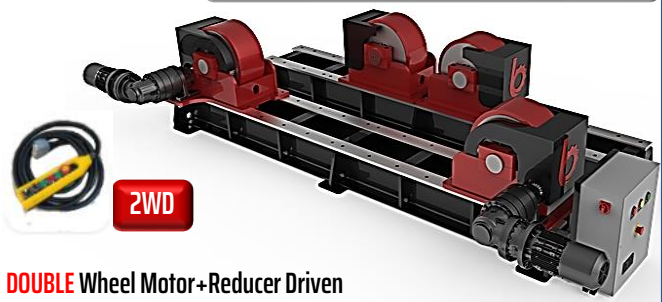
- ❖ Adjustment of Diameter as Standard by Manual Holes Adjustment
- ❖ Economical
- ❖ Easily Operated

«1» SET	«1 pc.» DRIVEN Unit
includes	«1 pc.» IDLER Unit

BCR3- 5 - 10 -1WD

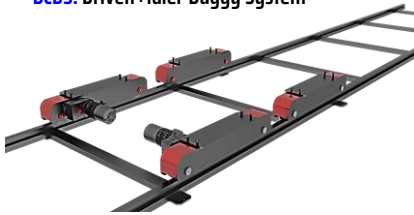


BCR15 - 20 -30 - 40 - 50 - 60 - 80 - 100 -2WD

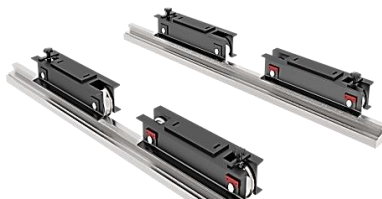


OPTIONAL Modifications & Equipments

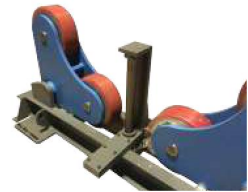
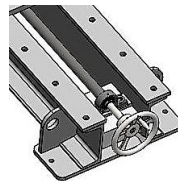
BCBS: Driven+idler Buggy System



MB-BCR: Manual Buggy System

4WD: Optional
«4»-Wheel Driven

AD-BCR : Anti-Drift

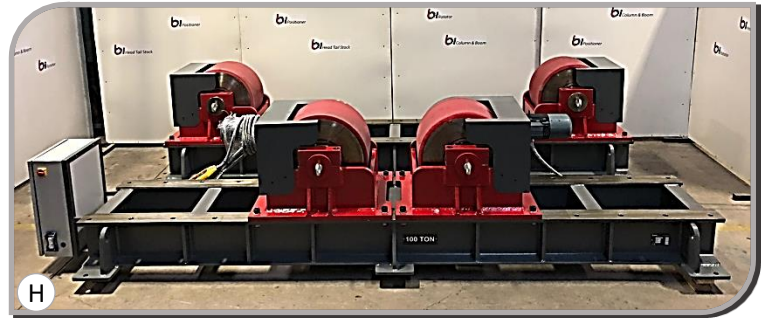
MDA-BCR: Adjustment Stroke **Motorised Driven**
by Forward Reward Threaded ShaftMHA-BCR : Adjustment Stroke by **Manual HandWheel**
with Forward-Reward Threaded Shaft

General Features ;

- BCR model Self -Align Rotators are used to rotate for the purpose of providing economical and practical circular welding solution to cylindrical parts having variable cylindrical diameters by means of Manual Hole Diameter adjustment..
- BCR model Self-Align Rotators are used for rotating to perform circular welding of cylindrical parts, Such as Tanks, Pressure vessels, Tower Tubes, Boilers,Depots, Reactors, Depots, Fuel Barrels, WindPower, Petrochemical, PipeLines, Shipbuilding sector,etc.
- BCR model Conventional Rotators requires pre-adjustment of diameters to contact with the workpiece. Adjustment is manually made on standard models by shifting the roller groups over slides and then fastened to the slide.
- Robust steel welded construction.
- The cylindrical part remains central independent of diameter and frequent adjustment of the welding head becomes unnecessary.
- Operators with BCR model Conventional Rotators by means of precise command control can easily rotate workpieces clockwise(CW) or counterclockwise(CCW) at accurate controlled speeds.
- The rotators have an important place in steel construction workshops because they reduce the use of a crane, as well as increase the speed and the efficiency of automatic or manual welding processes.

- ❖ All technical specifications are subject to change without prior notice.

ILLUSTRATIONS



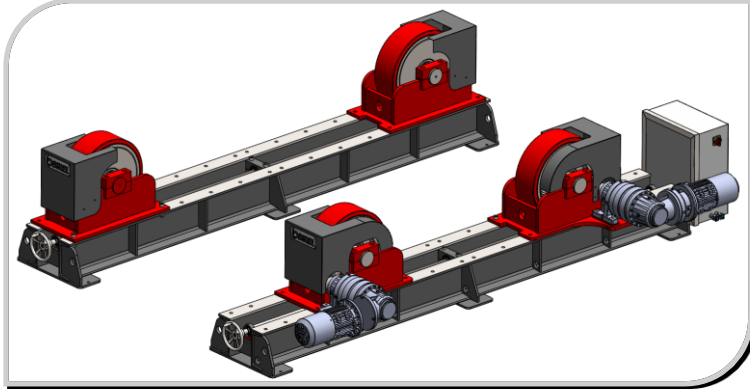
Technical Advantages ;

- One(1)set of BCR model Conventional Rotator consists of two units, one(1) driven unit and one(1) for idler units. According to specific applications, the number of driven and idler units can be changed.
- Birel Machinery as standard manufactures 3 • 5 • 6 • 10 • 15 • 20 • 30 • 40 • 50 • 60 • 80 • 100ton, Additionally, Upon request over 100ton models are manufactured as special productions.
- Within capacities of 3ton • 5ton•6ton • 10ton, Single driven Roller group is used, Above 10ton Double driven Rollers group is used.
- Optionally, Advantage of diameter adjustment by means of threaded Shaft that is operated by hand wheel over the slides forward and reward is available. Applicable to both driven and idler units.
- Optionally, For diameter adjusting, availability of moving forward and reward of roller group as motor driven by means of ththread shaft over slides on both units.
- Optionally, opportunity of moving over rails by means of Buggy carriers is available. Two Buggy carriers option are available. The first Buggy carrier choice is Rollers moved manually over rails and the second one is using driven movement of rollers over rails .
- Opportunity of placing additional stopper support to avoid slippage of workpiece from the rotator.

❖ All technical specifications are subject to change without prior notice.

FEATURES

Manual Diameter Setting by Handwheel Application



Elektrical Cabinet



Standard Equipments

- Diameter Range Fixing Holes on the slides.
- Adjustable wheel rotation speed & digital display on Electr.Cabinet
- Polyurethane Rollers absorbing shocks and vibrations
- 5 mt. Command Cable
- 5 mt.Power Cable
- Brake & Fan Cooled Motor (Asynchronous)
- Standard Machine Colors:
 - Chassis RAL 7011(Grey)
 - Sheet Covers:RAL 3020(Red)
- Power Supply: 380V - (3 phase+Neutral +Earthing)
- One (1) Year Warranty (wearing parts out of warranty)

Optional Control Units

DFPSE

Double Foot Pedal+Stick+Emergency Stop (3 m)



OHC



MP

Master Panel

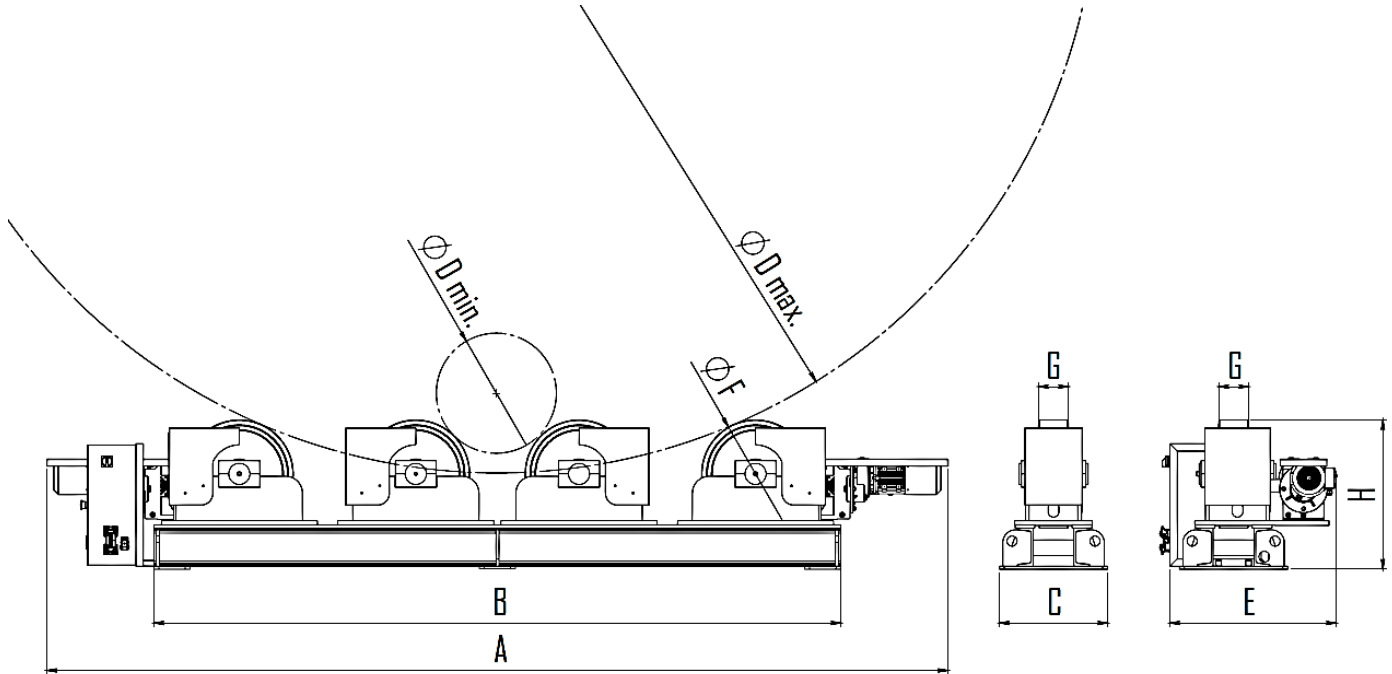


WRC

Wireless Remote Controller



❖ All technical specifications are subject to change without prior notice.



Technical Details :

Model : BCR	Symb	Unit	BCR-3	BCR-5	BCR-6	BCR-10	BCR-15	BCR-20	BCR-30	BCR-40	BCR-50	BCR-60	BCR-80	BCR-100
Capacity		ton	3	5	6	10	15	20	30	40	50	60	80	100
Max. Load (Drive Unit)		t/unit	1.5	2.5	3	5	7.5	10	15	20	25	30	40	50
Max. Load (idler unit)		t/unit	1,5	2.5	3	5	7.5	10	15	20	25	30	40	50
No. of Wheel Driven		WD	1WD	1WD	1WD	1WD	2WD	2WD	2WD	2WD	2WD	2WD	2WD	2WD
Rotation Speed	min	mm/min	200	200	200	200	200	200	200	200	200	200	200	200
	max		1100	1150	1150	1150	1200	1150	1200	1200	1200	1200	1200	1250
Diameter Range (Ødmin-ØDmax)	Ødmin	mm	200	250	250	250	400	450	450	450	450	550	550	600
	ØDmax		2000	3000	3000	3000	3300	4600	4600	4600	4600	5200	5200	5500
Wheel Diameter	ØF	mm	230	300	300	300	360	450	450	450	450	500	500	550
Wheel Width	G	mm	75	90	90	100	110	125	150	170	200	230	300	350
Wheel Coating			PU	PU	PU	PU	PU	PU	PU	PU	PU	PU	PU	PU
Length (Drive Unit)	A	mm	1650	2550	2550	2570	3170	3360	3620	3620	3620	3950	4200	4500
Length (Idler Unit)	B	mm	1350	2000	2000	2000	2150	2860	2860	2860	2860	3350	3350	3650
Width (Drive Unit)	E	mm	730	500	520	550	670	670	870	900	920	1000	1070	1200
Width (Idler Unit)	C	mm	330	380	380	400	435	450	500	530	550	620	700	790
Height	H	mm	370	420	430	440	550	620	670	680	710	780	785	870
Motor Power		kW	0.25 x 1	0.25 x 1	0.25 x 1	0.37 x 1	0.25 x 2	0.37 x 2	0.55 x 2	0.75 x 2	0.75 x 2	1,1 x 2	1,1 x 2	1,5 x 2
Weight		kg	260	410	430	490	900	1120	1410	1600	1800	2400	3050	4350

↳ Out of these standard. capacities, Birel Machinery, according to customer requirements, has the manufacturing possibility at different capacities, sizes.

❖ All technical specifications are subject to change without prior notice.