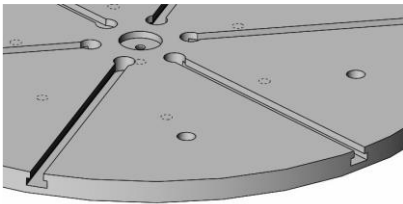
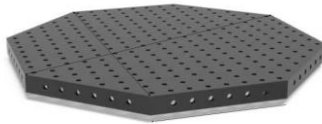




OPTIONAL Modifications & Equipments;

T-SE :Round Worktable T-Side Entry Grooved Thick Table Plate

OC-T:Octagonal Table

MC : Manual Chuck

BGR:3 Jaw Manual Pipe Gripper


General Features ;

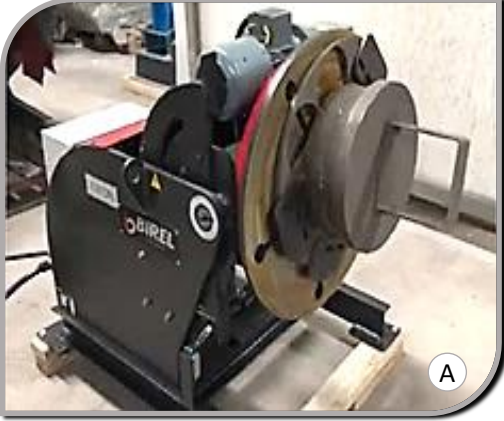
- BCP model Conventional Positioner is designed at best suitable configuration to supply function of worktable rotation & tilting of worktable angularly..
- BCP model Conventional Positioner as structurally has the best protective system. Against heavy parts positioner should be anchored to the facility ground.
- BCP model Conventional positioner, without considering of any geometric shape , all parts within dimensions has capability of positioning & forming suitable welding edge.
- BCP model Conventional Positioner, as structurally are constituted of body, motor ,worktable rotation and tilting systems, electric panel and cable remote operator control.
- The rotation & tilting movements of BCP model Conventional positioner are done by means of gear transmission system.
- Enable quick connection of workpiece by means of Slot Groove or T-Grooved worktable.
- BCP-model Conventional positioner WorkTable is supplied as standard with SLOT grooved. Optionally, If Worktable is requested as T-Grooved Thick Plate also can be manufactured as an option.

Technical Advantages ;

- Birel Machinery as standard provides BCP models in capacities of 0,25 - 0,50 - 1 - 2 - 3 - 5 - 8 - 10 - 20 ton.
- In special conditions, Out of these standard capacities, Birel Machinery, according to customer standards & requirements, has the opportunity of manufacturing possibility at different capacities.
- Motor with brake and forced fan cooling.
- Welding Arc Group
- Allow quick connection of workpieces by using " T " slots on worktable (Optional)
- For any special request or project, Please do not hesitate to contact with us.

❖ All technical specifications are subject to change without prior notice.

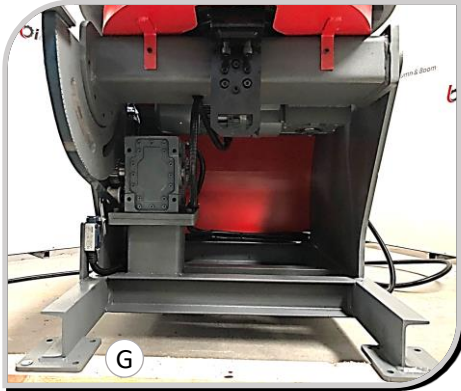
ILLUSTRATIONS



❖ All technical specifications are subject to change without prior notice.

FEATURES

Welding Arc Group



Mechanical gear movement for tilting.



Mechanical Angle Indicator



Electrical Cabinet



Standard Features

- Round Worktable with Slots.
- Adjustable worktable rotation speed.
- Rotational Speed Dijital display on Electrical Cabinet
- Mechanical gear movement for tilting.
- Mechanical Angle Indicator
- Tilt gear protection bands.
- Limit Switches to terminate movement.
- 5 mt. Command Cable with Hand Control Unit.
- 5 mt. Power Cable
- Brake & Fan Cooled Motor (Asynchronous)
- Welding Arc Group
- Standard Machine Colors:
 - Chassis RAL 7011(Grey)
 - Sheet Covers:RAL 3020(Red)
- Power Supply: 380V - (3 phase+Neutral +Earthing)
- One (1) Year Warranty (wearing parts out of warranty)

Optional Control Units

DFPSE

Double Foot Pedal+Stick+
Emergency Stop (3 m)



OHC

Overhead Hangable Control



SFP

Single Foot Pedal



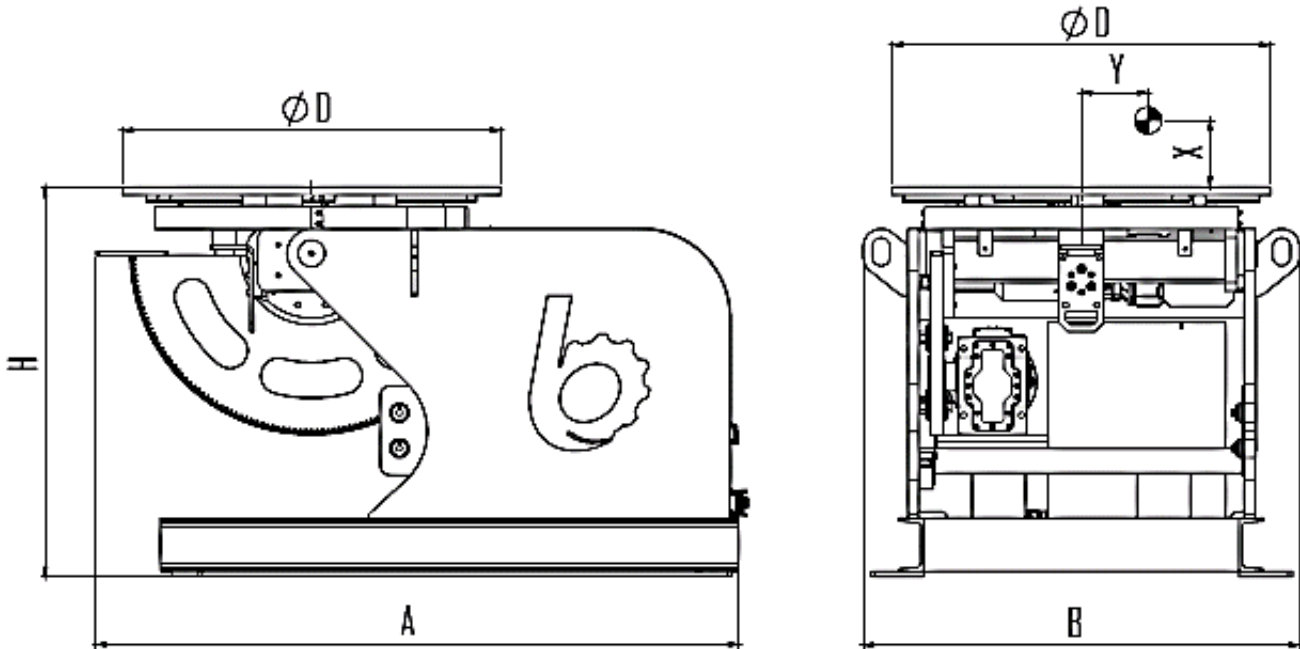
WRC

Wireless Remote Control



❖ All technical specifications are subject to change without prior notice.

TECHNICAL PROPERTIES



Technical Details :

BCP model	Symb.	Unit	BCP-025	BCP-050	BCP-1	BCP-2	BCP-3	BCP-5	BCP-8	BCP-10	BCP-20
Capacity		kg	250	500	1 000	2 000	3 000	5 000	8 000	10 000	20 000
Rotation Speed		rpm	0,15-1,65	0,15-1,75	0,15-1,4	0,15-1	0,10-0,70	0,1-0,78	0,1-0,66	0,1-0,5	0,05-0,5
Max. Rotational Torque		Nm	500	750	1570	3050	4500	7500	12050	15050	3500
Tilting Angle		deg	100	100	115	115	115	115	110	110	120
Tilting Torque		Nm	650	1360	2720	5130	8500	15500	25520	31580	108 800
Offset Distance	X-Y	mm	150-150	150-150	150-150	150-150	150-150	150-150	150-150	150-150	400-150
Max. Welding Current		Amp	700	700	700	700	700	1000	1000	1000	1000
Table Plate Diameter	ØD	mm	600	700	850	900	1000	1250	1500	1650	2150
Height	H	mm	725	765	880	1000	1100	1220	1420	1480	1910
Length	A	mm	1170	1180	1450	1620	1760	2120	2350	2410	3000
Width	B	mm	810	870	980	1150	1350	1725	1750	1790	2450
Motor Power of Table		kW	0,25	0,25	0,37	0,55	0,55	1,1	1,5	1,5	3
Motor Power of Tilting		kW	0,25	0,37	0,55	0,75	1,1	2,2	3	4	3 x 2
Weight		kg	320	390	710	1050	1120	1910	2980	3450	9630

↳ Out of these standard capacities, Birel Machinery, according to customer requirements, has the manufacturing possibility at different capacities, sizes.

❖ All technical specifications are subject to change without prior notice.